



# Quick Start Guide



# Perfect Golf Quick Start Guide

## To play Perfect Golf you must first have purchased the following:

1. A SkyTrak Launch Monitor
2. Have an active 'Play and Improve Package'
3. Have purchased 'Perfect Golf' Software package from SkyTrakgolf.com
4. Have purchased 'Perfect Golf Steam' version from <http://store.steampowered.com/app/288140/>

## Your PC must have the following recommended specification:

OS: Windows 7/8.1/10

Processor: Quad Core

Memory: 8 GB RAM

Graphics: GeForce GTX 770

DirectX: Version 9.0

Network: Broadband Internet connection

Hard Drive: 1 GB available space

Sound Card: DirectX 9.0c compatible

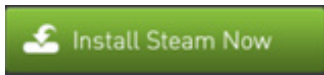
## IMPORTANT FIRST STEP TO GETTING STARTED:

If Steam is already installed launch the software using the Desktop Icon.

If you do not already have Steam follow this link to install now:  
[http://store.steampowered.com/about/?snr=1\\_4\\_4\\_\\_11](http://store.steampowered.com/about/?snr=1_4_4__11)

Now follow these step by step instructions

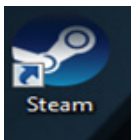
Click on the “Install Steam Now” button.



A Steam setup installer will appear at the bottom of the webpage. Select the “Run” button.



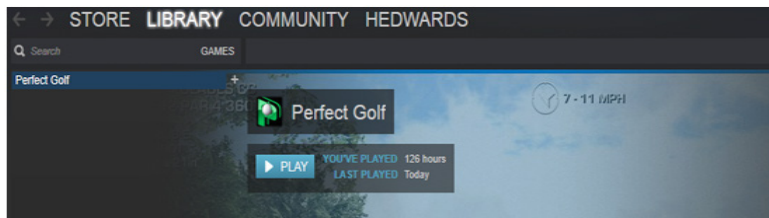
Once Steam has been installed on your computer an icon will appear on the Window’s Desktop, Double Click the Steam Icon (shown below) to launch Steam.



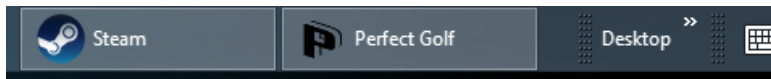
# Perfect Golf Quick Start Guide

Connect the SkyTrak unit to the PC, using a full to micro USB extender cable. Switch on the unit, and select the “Play” button directly beneath the Perfect Golf Logo.

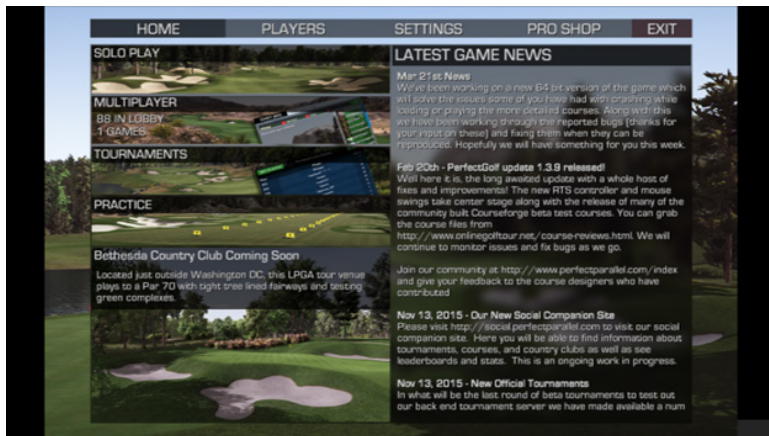
NOTE: The Perfect Golf Steam page may not be the default displayed if the user has more than one game in their library. In this instance, Select LIBRARY-GAMES, then search your games list for Perfect Golf.



The launch process may take a few seconds, once completed Perfect Golf will appear, minimized on the Window's taskbar.



Click on the Perfect Golf Tab and the application will maximize. (See below)

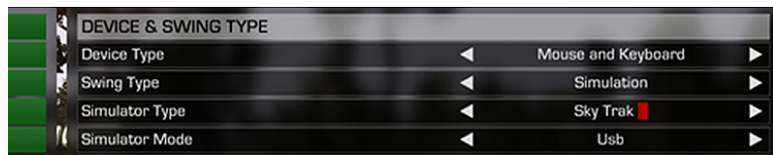


# Perfect Golf Quick Start Guide

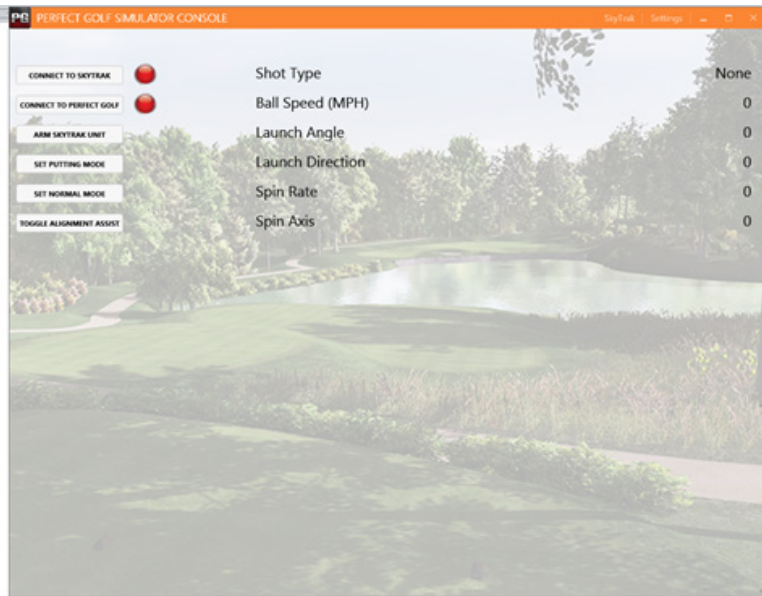
Select Settings, then Controls



Ensure the Swing Type is set to Simulation and the Simulator Type is set to SkyTrak. (The SkyTrak device will remain the default unless changed)

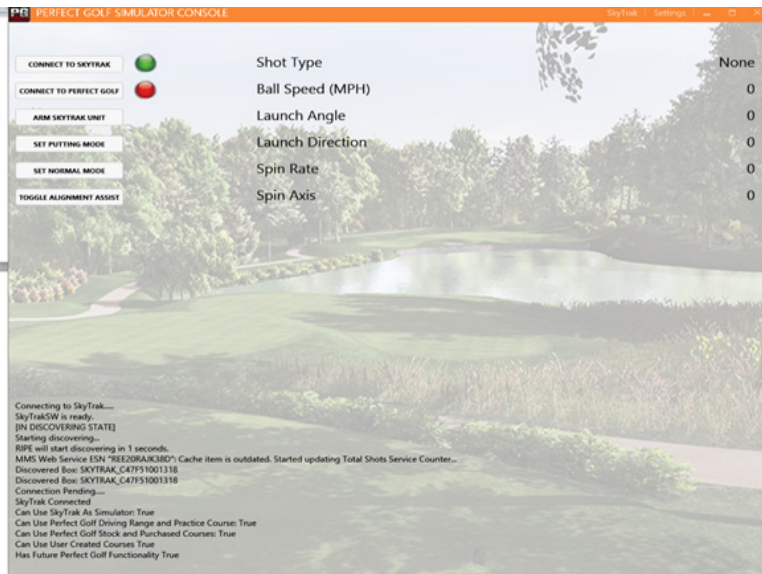


Once the SkyTrak has been selected, the Perfect Golf Simulator Console will appear.



# Perfect Golf Quick Start Guide

Select the “Connect to SkyTrak” button; wait for the Red Light to turn Green



The screenshot shows the 'PERFECT GOLF SIMULATOR CONSOLE' window. On the left, there are several buttons: 'CONNECT TO SKYTRAK' (with a green light), 'CONNECT TO PERFECT GOLF' (with a red light), 'ADM SKYTRAK UNIT', 'SET PUTTING MODE', 'SET NORMAL MODE', and 'TOGGLE ALIGNMENT ASSIST'. On the right, a list of metrics is displayed with their current values:

Metric	Value
Shot Type	None
Ball Speed (MPH)	0
Launch Angle	0
Launch Direction	0
Spin Rate	0
Spin Axis	0

At the bottom left, a status log shows the following text:

```
Connecting to SkyTrak...
SkyTrakSW is ready.
[IN DISCOVERING STATE]
Starting discovering...
RIPE will start discovering in 1 seconds.
MMS Web Service ESN "RE220RAJCK3BD": Cache item is outdated. Started updating Total Shots Service Counter...
Discovered Box: SKYTRAK_C47F51001318
Discovered Box: SKYTRAK_C47F51001318
Connection Pending...
SkyTrak Connected
Can Use SkyTrak As Simulator: True
Can Use Perfect Golf Driving Range and Practice Course: True
Can Use Perfect Golf Stock and Purchased Courses: True
Can Use User Created Courses: True
Has Future Perfect Golf Functionality: True
```



Select the “Connect to Perfect Golf” button, and wait for the Red Light to turn Green.

The screenshot displays the 'PERFECT GOLF SIMULATOR CONSOLE' interface. On the left, there is a vertical menu with several buttons: 'CONNECT TO SKYTRAK' (with a green light), 'CONNECT TO PERFECT GOLF' (with a green light), 'ARM SKYTRAK UNIT', 'SET PUTTING MODE', 'SET NORMAL MODE', and 'TOGGLE ALIGNMENT ASSIST'. Below these is an 'UPDATE LOG' button. The main area shows a 3D rendering of a golf course with a pond and trees. On the right side, there is a list of statistics with values: Shot Type (None), Ball Speed (MPH) (0), Launch Angle (0), Launch Direction (0), Spin Rate (0), and Spin Axis (0). At the bottom left, there is a log window with the following text: 'Connecting to SkyTrak... SkyTrak is ready [IN DISCOVERING STATE] Starting discovering... BPP will start discovering in 1 seconds. MMS Web Service (EA "REDSRACKS") Cache item is outdated. Started updating Total Shots Counter... Discovered Box: SKYTRAK\_C4793100118 Discovered Box: SKYTRAK\_C4793100118 Connection Pending... SkyTrak Connected Can Use SkyTrak As Simulator: True Can Use Perfect Golf Driving Range and Practice Course: True Can Use Perfect Golf Shop and Purchased Courses: True Can Use User Created Courses: True Has Future Perfect Golf Functionality: True Perfect Golf: Waiting for Connection... Perfect Golf: Resending Device ID Perfect Golf: Connected to Perfect Golf and Authenticated'

# Perfect Golf Quick Start Guide

Click on the Perfect Golf Icon on the Windows Task Bar.



The Perfect Golf Software is ready for use. Note: The top green light on the SkyTrak Unit will only turn green when a player is on the tee, and during rearming of the unit after a shot.



## Select and play a course:

Select "Home" then "Solo Play" to setup and begin a round of golf.



Among other options on this page you can select gimmies from 2ft feet to 8ft, or select auto-gimmies, you may also select the holes you wish to play.



# Perfect Golf Quick Start Guide

Select Create to move to the final launch page



From this screen you can start your round of golf by selecting “Ready,” then hitting the Start button (Below). This page also shows your playing partners.



## Perfect Golf Quick Start Guide

A loading page will start similar to the one below. Once the loading page has completed you can “Tee Off.”



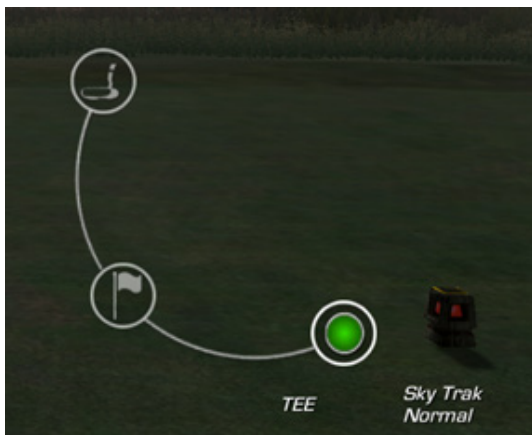
**NOTE:** A circular green arming light in the bottom right-hand-corner of the screen indicates the SkyTrak unit is armed and ready for the first shot.



### Tips:

A) The green arming button, in the bottom right corner of the screen, below, indicates the SkyTrak unit is armed and ready for a shot to be hit. When the ball lands on the putting green the Putter icon will also turn green indicating it is in putting mode.

B) In the event a SkyTrak unit's top LED turns red, but does not return to green, i.e. a practice swing triggers the unit, selecting the circular green "Arm Button" in the software, should rearm the unit ready for use.





## **Useful Links to Perfect Golf:**

Perfect Parallel, Inc Corporate Site <http://www.perfectparallel.com>

Perfect Golf, Inc Corporate Site <http://www.perfect.golf>

Perfect Golf Community Forum <http://www.perfectparallel.com/index>

Perfect Golf Social Site <http://social.perfectparallel.com> (Log in with your Steam account)

For Technical Support Email Perfect Golf using the following link: [info@perfectparallel.com](mailto:info@perfectparallel.com)